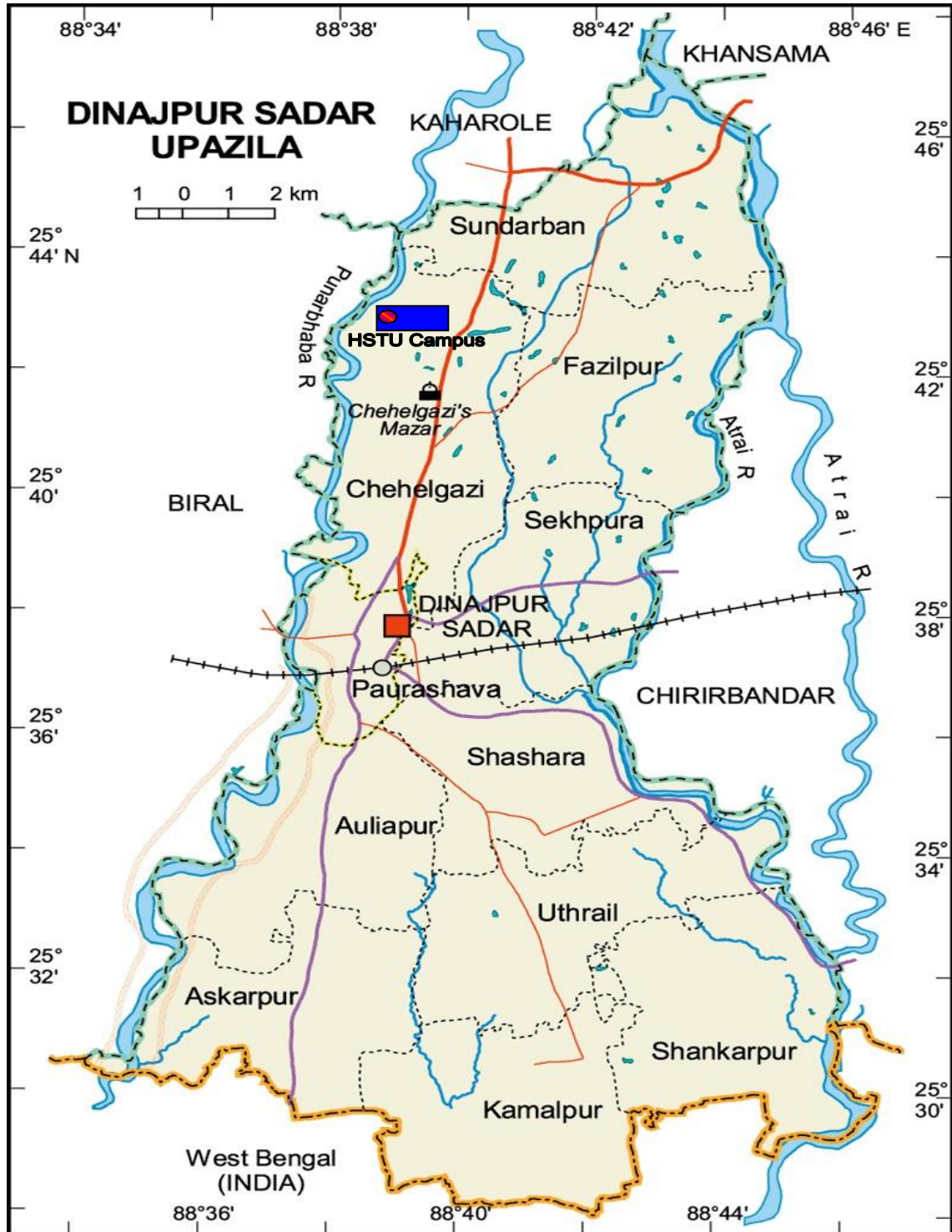


APPENDIX

Appendix I. Location of the experimental site (map of Dinajpur Sadar Upazila showing the research plot)



Appendix II: The soil nutrient composition of Genetics and Plant breeding Research field of HSTU, Dinajpur

Physical and chemical properties	Value
Sand (%)	65
Silt (%)	30
Clay (%)	5
Textural class	Sandy loam
pH	5.50
Organic matter (%)	1.17
Total nitrogen (%)	0.06
Magnesium (meq/ 100g)	1.74
Potassium (meq/ 100g)	0.10
Phosphorus ($\mu\text{g/g}$)	44.98
Sulphur ($\mu\text{g/g}$)	1.84
Boron ($\mu\text{g/g}$)	0.08
Zinc ($\mu\text{g/g}$)	6.94
Calcium ($\mu\text{g/g}$)	6.31

μg : Micro gram; meq: Mili equivalent

Source: Soil Resources Development Institute (SRDI), Nashipur, Dinajpur-5200.

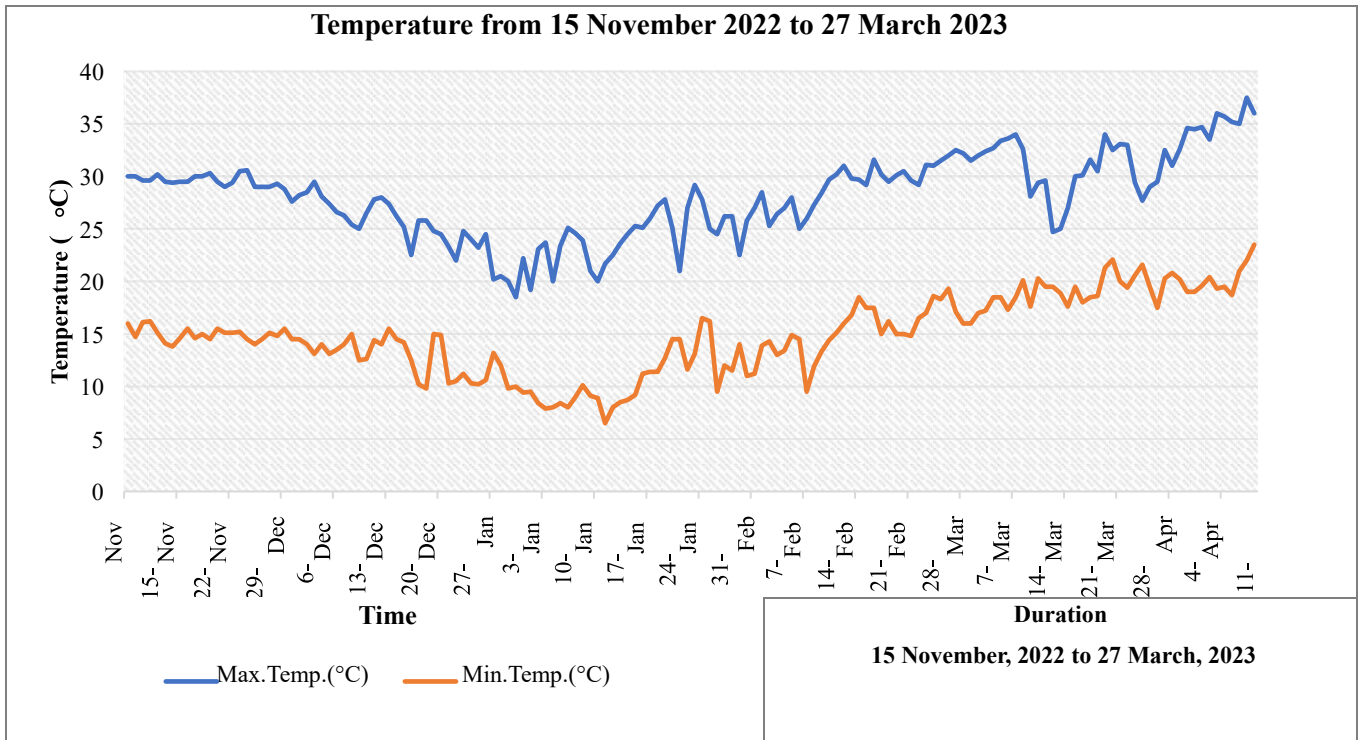


Figure 1: Graphical representation of temperature during the wheat growing season at the experimental site

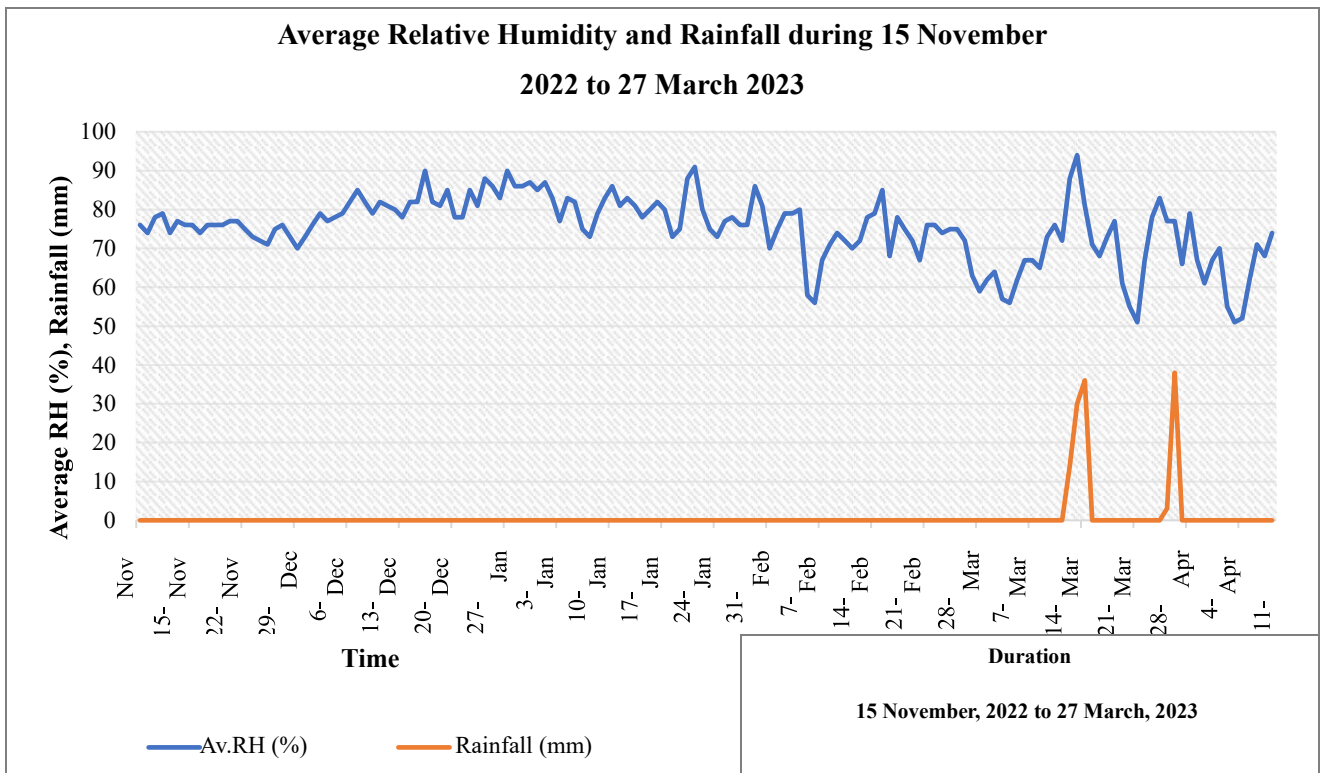
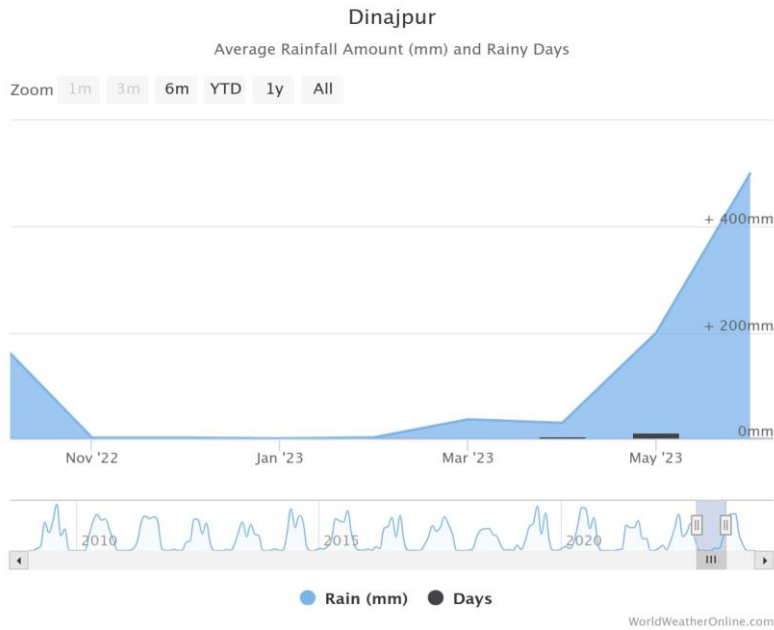
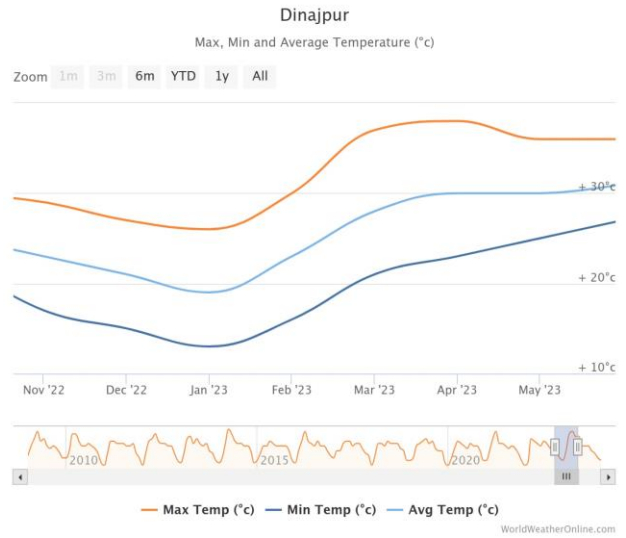
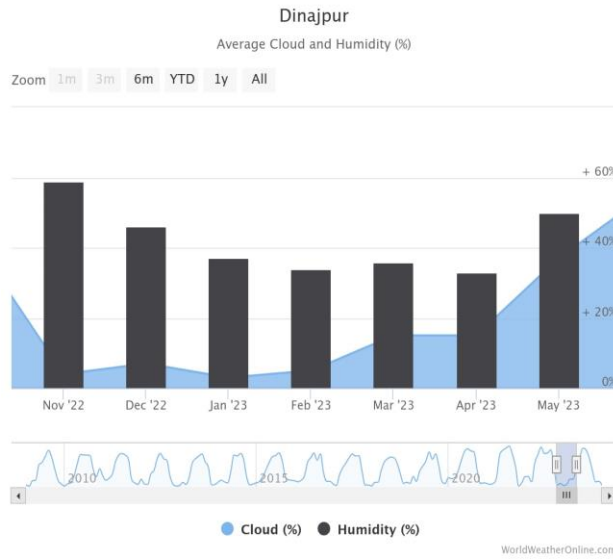


Figure 2: Graphical representation of the average related humidity and rainfall during the wheat growing season at the experimental site

Appendix III: Weather data for the growing season of wheat during the period from December 2022 to April 2023



Appendix IV: Field observation at the germination stage to harvesting stage for the growing season of wheat, 2022-2023







Appendix V: Some photographs of Molecular observation



